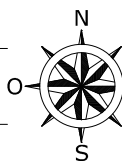
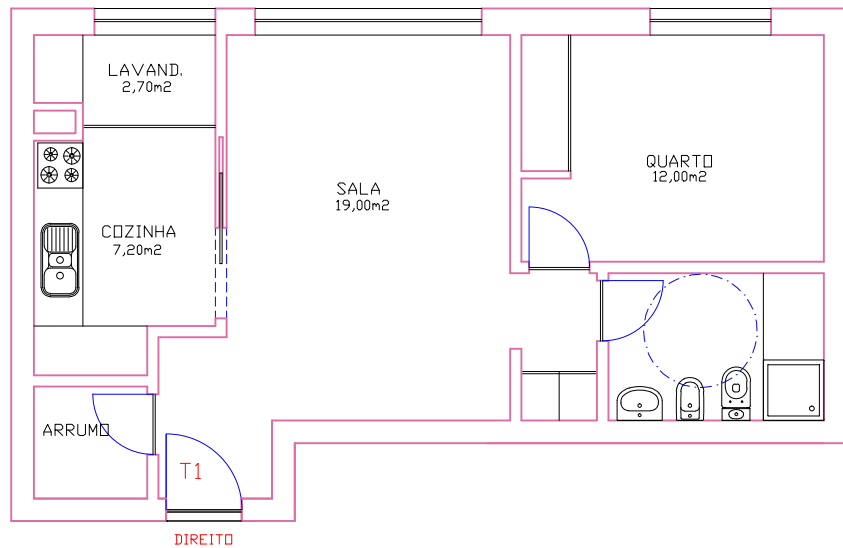


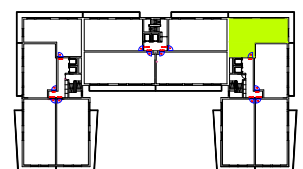
Edifício Parque V - Paredes



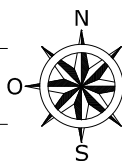
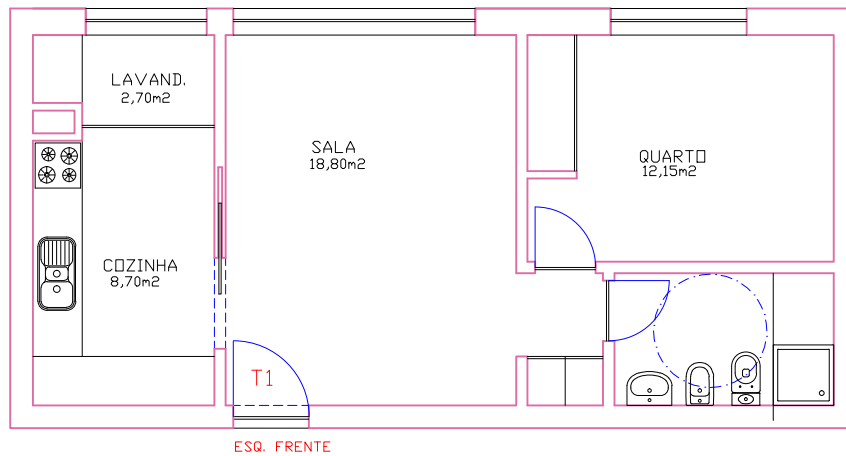
Entrada C - fração M (casa 13)

T.1 Direito - Piso 1 (R/C)

Área bruta da fração 65,50m²



Edifício Parque V - Paredes



Entrada B - fração L (casa 12)

T.1 Esquerdo Frente - Piso 1 (R/C)

Área bruta da fração 62,00m²

